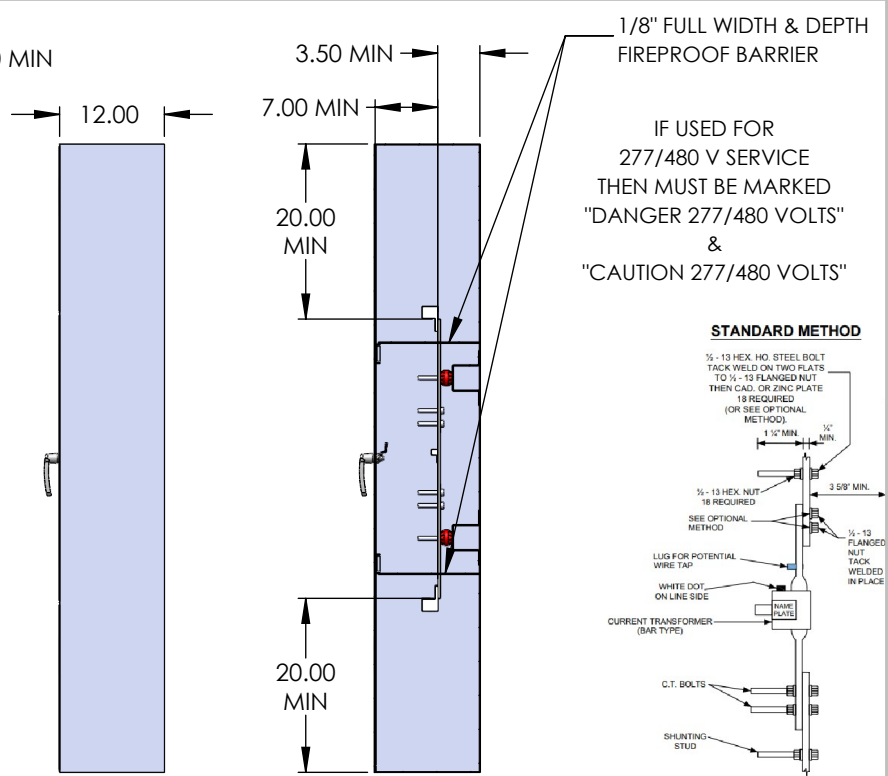
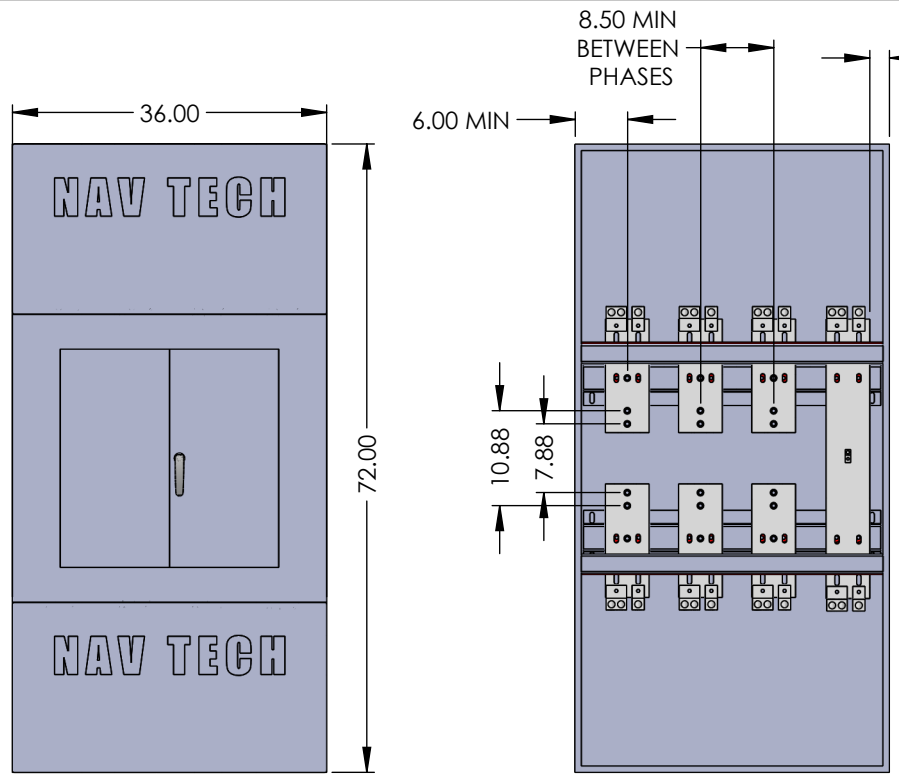


2

1

B

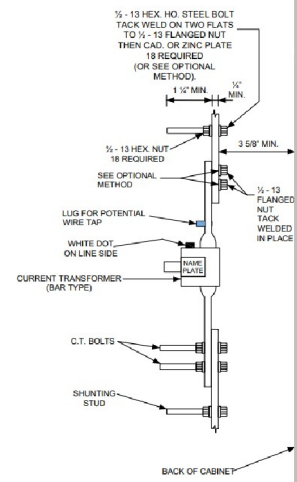
B



1/8" FULL WIDTH & DEPTH FIREPROOF BARRIER

IF USED FOR 277/480 V SERVICE THEN MUST BE MARKED "DANGER 277/480 VOLTS" & "CAUTION 277/480 VOLTS"

**STANDARD METHOD**



COVERED FRONT VIEW

OPEN FRONT VIEW

SIDE VIEW

SECTIONED SIDE VIEW

CT INSTALLED VIEW

- NOTES:
1. NEMA 1 CONSTRUCTION INCLUDES STITCH WELDED SCREW FASTENED ENCLOSURE.
  2. BUS BARS SILVER PLATED COPPER - 98% CONDUCTIVITY.
  3. ENCLOSURE WILL DISPLAY MANUFACTURERS NAME.
  4. ALL NUTS, BOLTS AND WASHERS MUST BE 1/2-13 ZINC COATED GRADE 5 STEEL.
  5. TERMINALS INCLUDED - SEE CHART FOR # OF SETS.
  6. FRONT DOOR IS OUTFITTED WITH SEALABLE SCREWS & PADLOCKABLE PROVISIONS.
  7. DESIGNED FOR EITHER LINE TOP/LOAD BOTTOM CABLE ENTRY OR LOAD TOP/LINE BOTTOM CABLE ENTRY.

PART #	AMPS	BUS LEAVES	WIRE SETS (600MCM)
NAV-298CT-800	800	1	2
NAV-298CT-1200	1200	1	3
NAV-298CT-1600	1600	2	4

A

A

NAME	DATE
N. BOSETTI	7/22/2025
DRAWN BY	
REVIEWED BY	



MAT'L: 12 GAUGE GALV STEEL

FINISH: GRAY POWDER COAT ANSI 61

WEIGHT:

DRAWING TITLE: 298CT SPEC SHEET

PART #: NAV-298CT-XXXX

DESCRIPTION: NEMA 1 298 CT CABINET 800A-1600A 600 VAC MAX SPECIFIED TO CON ED MES 298

**PROPRIETARY AND CONFIDENTIAL**

THE INFORMATION CONTAINED IN THIS DRAWING IS THE SOLE PROPERTY OF NAV-TECH INC. ANY REPRODUCTION IN PART OR AS A WHOLE WITHOUT THE WRITTEN PERMISSION OF NAV-TECH INC. IS PROHIBITED.

155 MARCUS BLVD  
HAUPPAUGE, NEW YORK 11788  
PH: (718) 257-2111 FAX: (718) 257-2626

ALL DIMENSIONS ARE NOMINAL UNLESS EXPLICITLY STATED OTHERWISE

**DO NOT SCALE DRAWING**

SCALE:	1:20	SIZE	A	SHEET	1 OF 1	REV.	6
--------	------	------	---	-------	--------	------	---

2

1